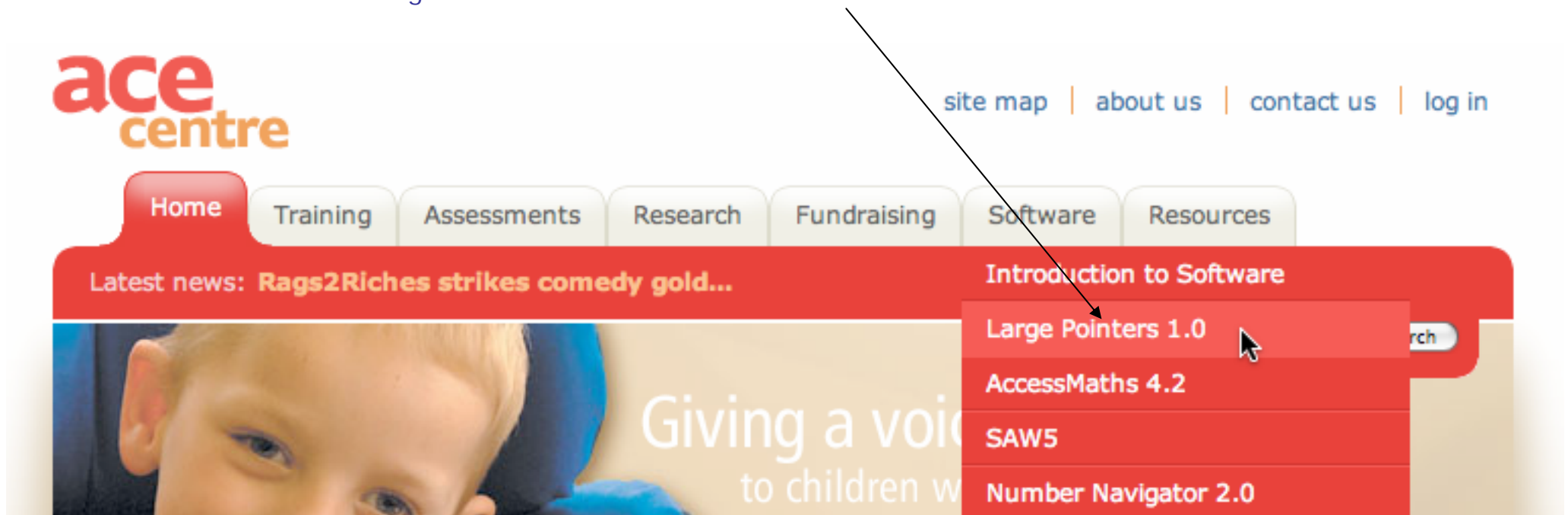


### Download Additional Mouse Pointers

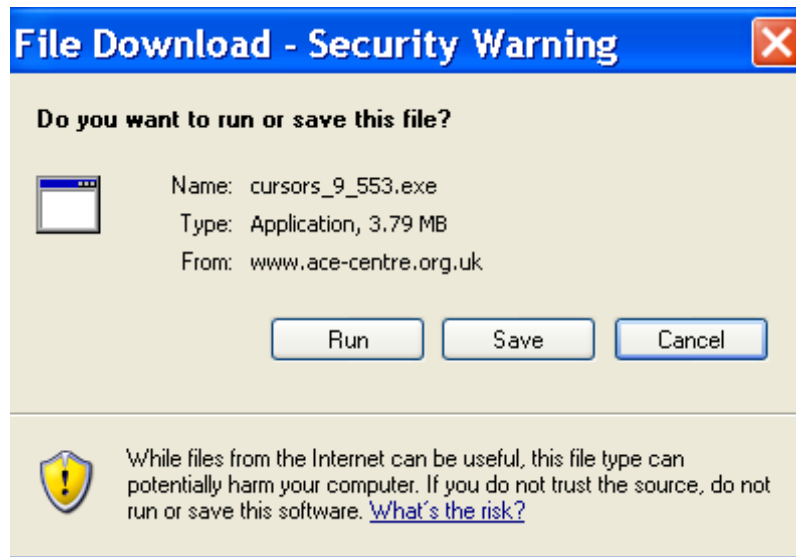
1. Open your internet browser (for example, Internet Explorer) and go to the site: [www.ace-centre.org.uk](http://www.ace-centre.org.uk)
2. Click on the link called 'Large Pointers 1.0' in the software section.



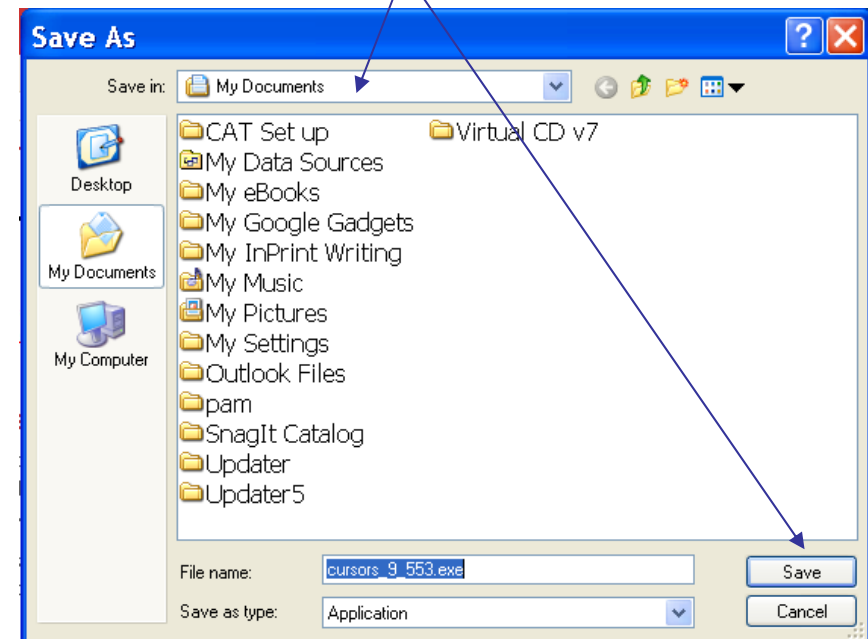
3. Click the 'Download now' link in the blue box on the right.

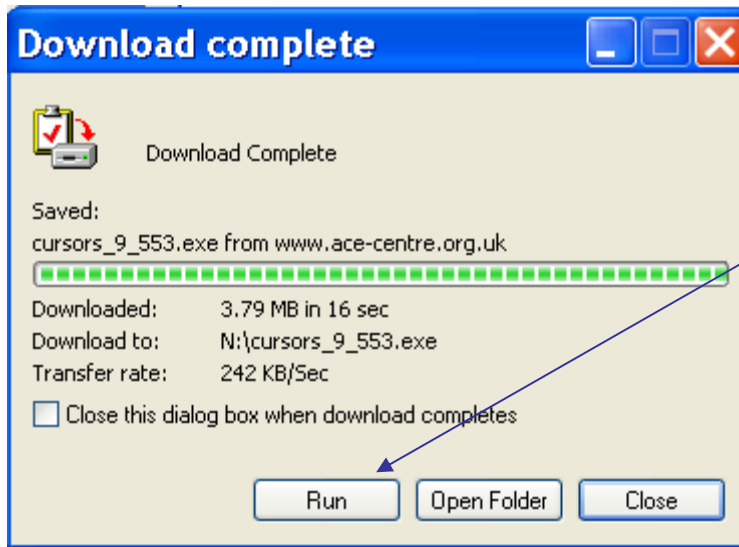


3. A window will open asking you whether you would like to run or save the file. Click 'Save.'

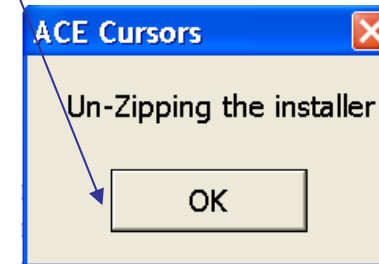


4. Save the file into 'My Documents.' It will take a few seconds to download.

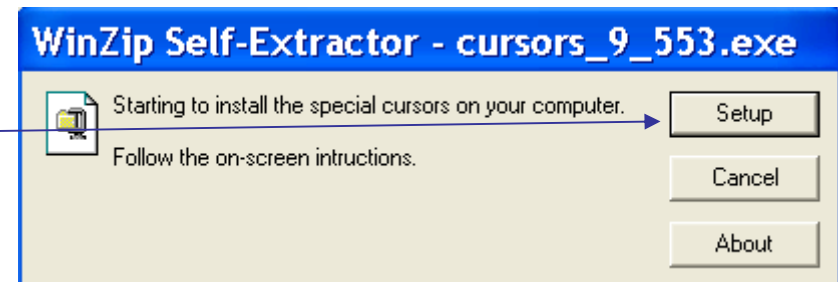




5. Once the download is complete, click 'Run.' Then click 'OK' to unzip the installer.



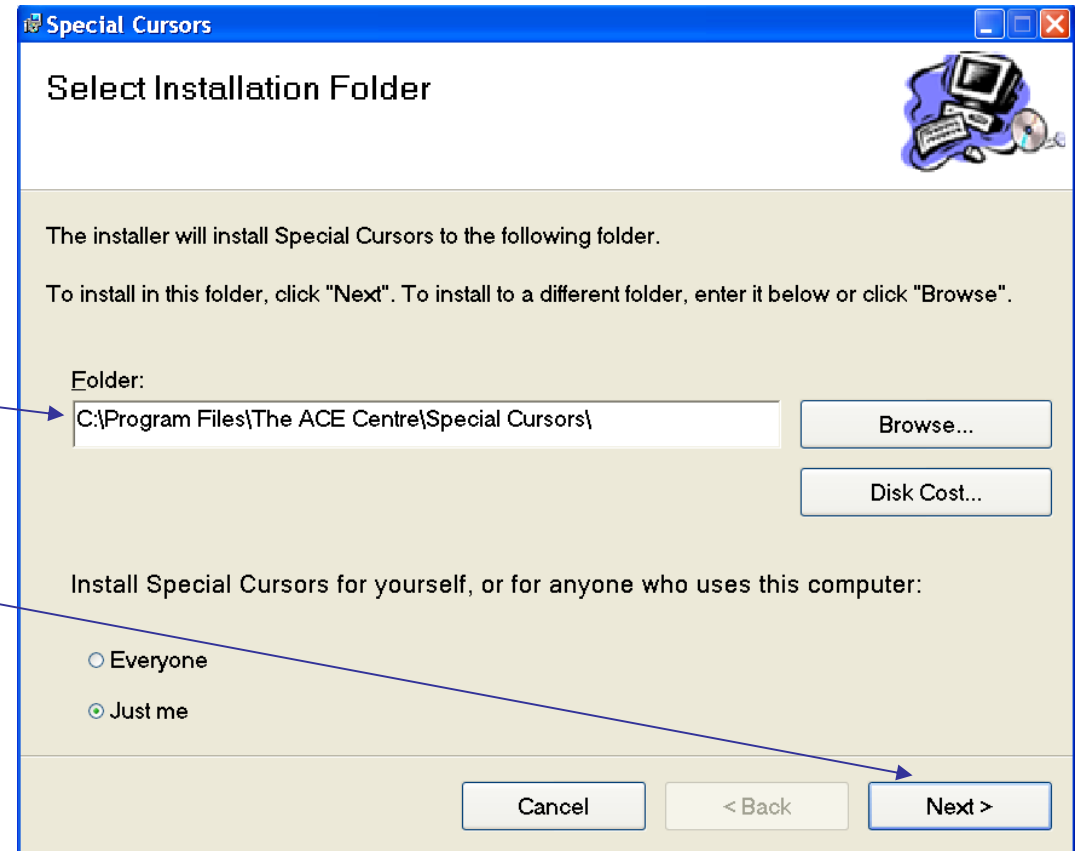
6. Click 'Set Up' to begin installing the special cursors onto your computer.



7. The Installation Wizard will open. Click 'Next' as you run through the set-up.

8. When the window 'Select Installation Folder' appears, make a note of the 'Folder' location that the cursors are being stored in.

9. Click 'Next' and then the installation is complete.

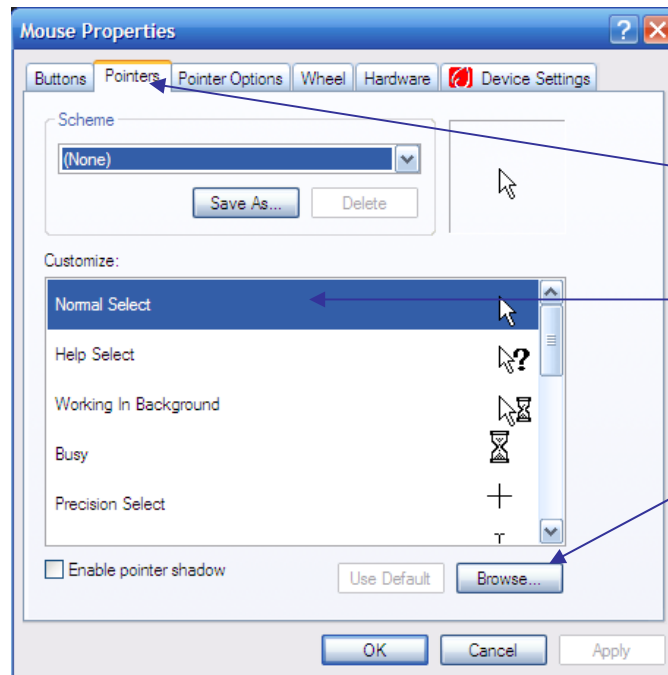
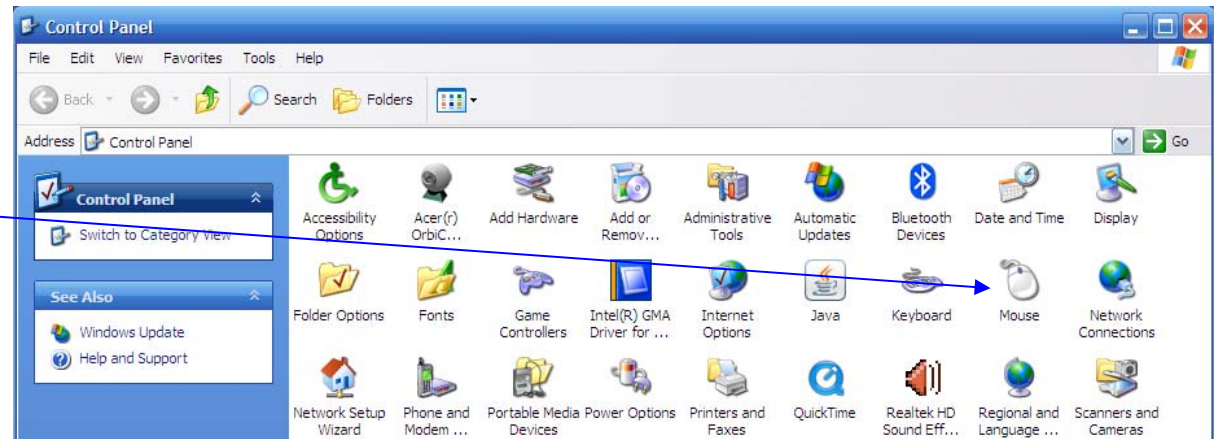


10. Now that you have a new range of large mouse pointers, you can change your current pointer to one of these. Go to



11. Select 'Control Panel.'

12. Select 'Mouse.'



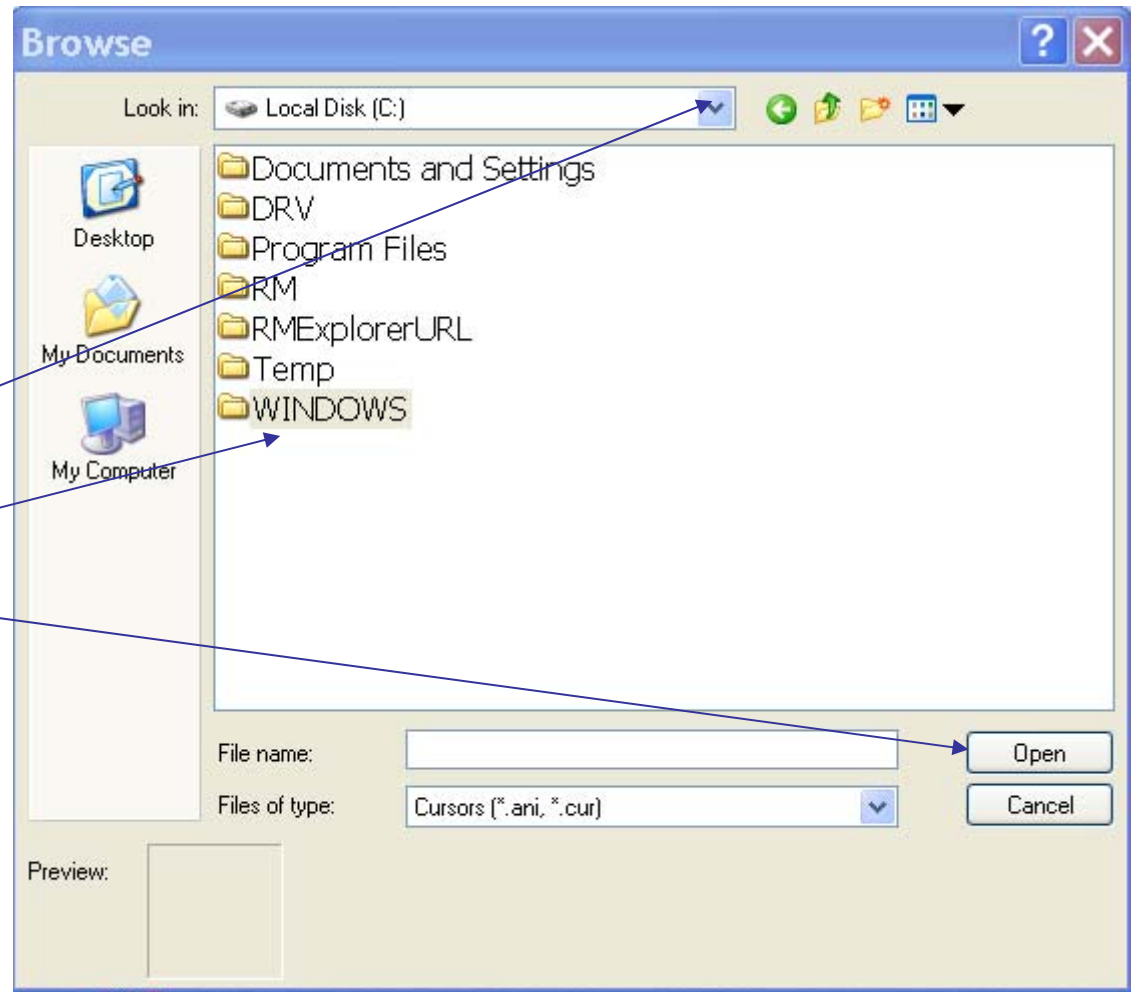
13. Select the 'Pointers' Tab.

14. Click on the pointer you wish to change (usually 'Normal Select')

15. Click on Browse.

16. To navigate to where the new cursors that you downloaded were saved click on the downward arrow and select the C drive (This relates to the file path that you noted on point 9 above.)

Select 'WINDOWS' and click 'Open.'



17. In the same window, select the 'Cursors' folder and click 'Open.'

18. You should now see that within the long list of cursors there is an additional folder called 'ACE cursors.' If you select this folder and click Open, there are additional cursors – such as left-hand cursors which you can use.

19. To change your cursor, scroll through until you find the pointer of choice. Click on that pointer.

20. Click 'Open.'

The selected mouse pointer now appears in the list. Click 'Apply,' followed by 'OK.'

