

Crick USB switch box instructions.

Installation.

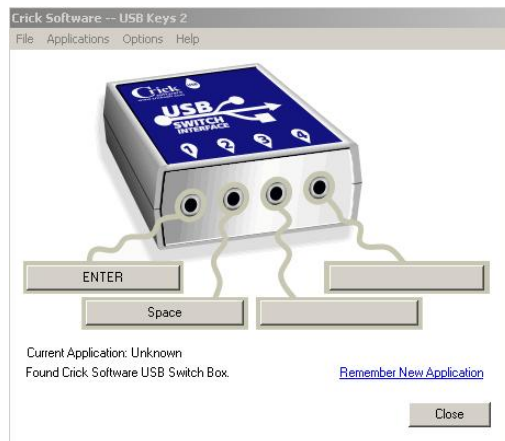
The Crick switch box plugs into the USB port of your computer. The drivers must be loaded from the disk before it is plugged in (this step required once only).

Once the drivers are loaded, the USBkeys software should be running, and there should be a small icon in the system tray with a number one and two on it, shown on the left below.



If the software is not running, start it either from the start menu or by locating the desktop shortcut.

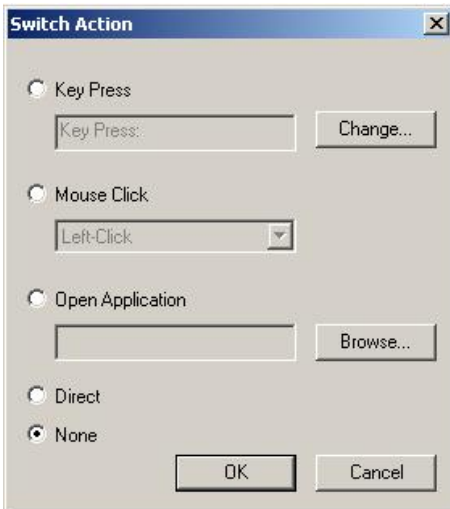
Double clicking on the system tray icon will bring up the following box:



You can see from this box which application is running and whether the USB box is connected.

Manual setup.

Each switch input can be set up to perform a specific key press, mouse action or can be used like a shortcut to a program. Click on the dialogue box for the switch input you want to set up, you will then see the following box:



To set up for a key press, select 'Key Press' and then press the key you want on the keyboard.

For a mouse click, select 'Mouse Click' and then select the relevant function.

To get the switch to open a program, select 'Open Application' then browse to the program on your relevant disk drive.

Automatic setup.

If the application is a known application, USB Keys will set up the switches for you. For example, when using Clicker, switches 1 and 2 will be set up as 'Direct'. 1 will be *Select* and 2 will be *Scan*.

If you want USB Keys to remember a new application not in its database, set up the switches as you want them and then click on 'Applications' and then 'Remember New Application' and follow the instructions.